



CARBON FOOTPRINT REPORT

2023/2024

Carbon Emissions Footprint Report for: South West Concrete Repairs Ltd

Reporting period: 1 November 2022 – 31 October 2023

Prepared date: 08.07.2024

Prepared by: Ade Adewumi / Andrew Moss Robinson

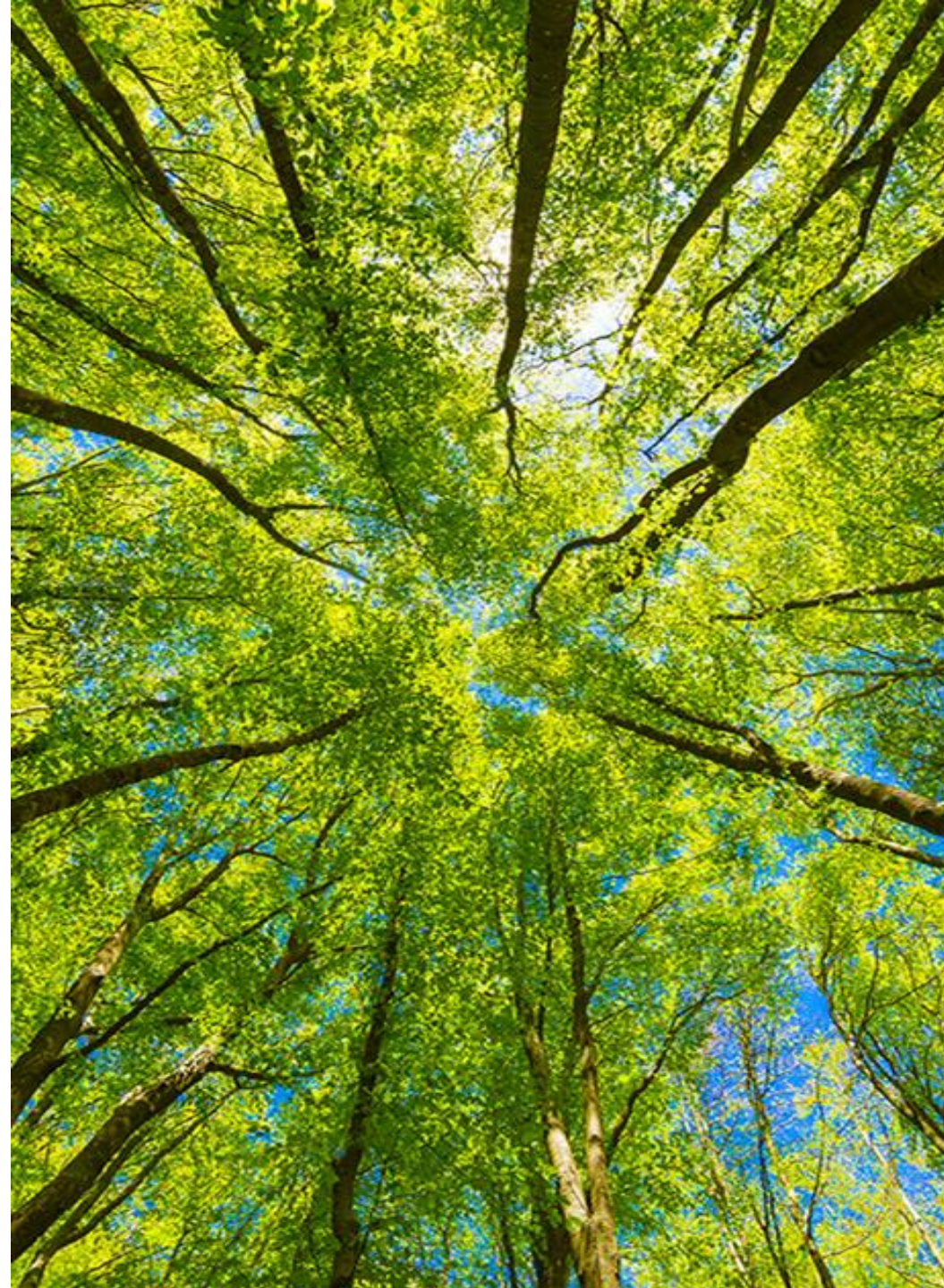
©2024 CARBON SENSE LTD
1ST FLOOR OFFICES, 10 MARKET PLACE, PENZANCE,
CORNWALL, TR182JA
COMPANY NO. 14142132
www.makecarbonsense.co.uk

Report Contents

- Company overview
- Methodology and boundaries
- Baseline emissions report;
 - Scope breakdown
 - Intensity Metrics
 - Business Travel
 - Energy & Fuels
 - Employee Commuting
 - Detailed Scope 3
- Results Summary
- Assessors statement and comments

Disclaimer:

This report has been prepared for South West Concrete Repairs Ltd. We have taken all reasonable care to ensure that the facts stated herein are true and accurate in all material aspects. No liability of any kind is assumed by Carbon Sense Ltd. or any of its directors, officers, employees, advisors or agents about any such opinions, projections, assumptions or any other information contained in, or otherwise concerning this report.





Quantification & Reporting Methodology

Carbon emissions are calculated using the UK Government published carbon conversion factors relevant to the reporting period. Our carbon reduction plans follow the Public Procurement Notice (PPN 06/21) guidance, and where possible, additional criteria and narrative is included tailored to each organisation.

Organisational Boundary

South West Concrete Repairs Ltd. has no subsidiaries nor parent companies to be concerned with, so the organisational boundary is defined as solely the organisation **South West Concrete Repairs Ltd.**

Operational Control Methodology has been applied, meaning we endeavour to include all emissions over which **South West Concrete Repairs Ltd** have Operational Control.

For the purposes of this Carbon Footprint, we are including Scope 1, Scope 2 and key categories of Scope 3 detailed below.

Operational Scopes

Emissions from Scope 1 and 2 have been measured including key Scope 3 categories: **Business travel/ Employee commuting/ Waste / Water / Purchased goods / Capital goods**

Standard and Methodology Used

South West Concrete Repairs Ltd. categorises its Greenhouse Gas (GHG) Emissions as Scope 1, 2 or 3 as referred to in the Greenhouse Gas Protocol. Emissions have been calculated using a mixture of spend based calculations and the more accurate volume/supplier specific data.

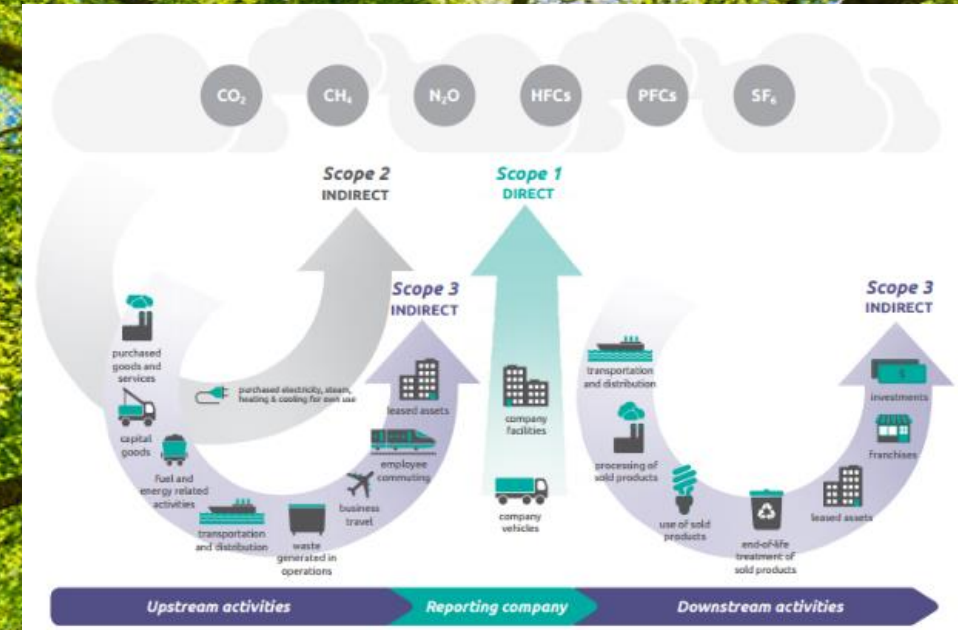
The emissions have then been calculated using various conversion factors as evidenced and outlined in the workbook. As more accurate data is received, it is recommended to continuously and/or annually review this process.

Data Quality / Confidence

The data used to generate this report has been collected from various sources from within the company. These emissions have been converted to CO2e using published GHG conversion factors. In some cases, we have used spend based conversion factors published by BEIS/DEFRA for the relevant period. DEFRA 2021 conversion factors were used for spend based calculations sourced from ClimateIQ.

[Greenhouse gas reporting: conversion factors 2023 - GOV.UK \(www.gov.uk\)](https://www.gov.uk/government/publications/greenhouse-gas-reporting-conversion-factors-2023)

<https://www.climateiq.io/data/explorer>





Company Overview

| | |
|----------------------------------|---|
| Reporting Period: | November 2022 – October 2023 |
| Industry | 43999 - Other specialised construction activities |
| No. of staff | 8 |
| No. of sites - Owned | 1 |
| No. of sites - Leased | 0 |
| No. of Company Vehicles - Owned | 6 |
| No. of Company Vehicles - Leased | 0 |

South West Concrete Repairs Ltd. is a Private Limited Company (**03431115**) registered in England & Wales with a registered address of: **Unit 17, Reynolds Park Bell Close, Plympton, Plymouth, Devon, United Kingdom, PL7 4FE.**

South West Concrete Repairs Ltd. was established in January 1995 to provide specialist services to the Construction Industry and Public authorities in the Plymouth area and surrounding Counties. Following the transfer to a limited company in 1997 the company was able to extend both its scope of services and areas of operation and is now covering the Midlands, Wales, and the South of England as well as the whole of the South West.

Whether it's cracking or spalling concrete, corroding reinforcement, leaking structure or any other defects or problems, South West Concrete Repairs have over 20 years of experience to identify the causes & give you clear, honest and straightforward advice.





Baseline Reporting Period: November 2022 – October 2023

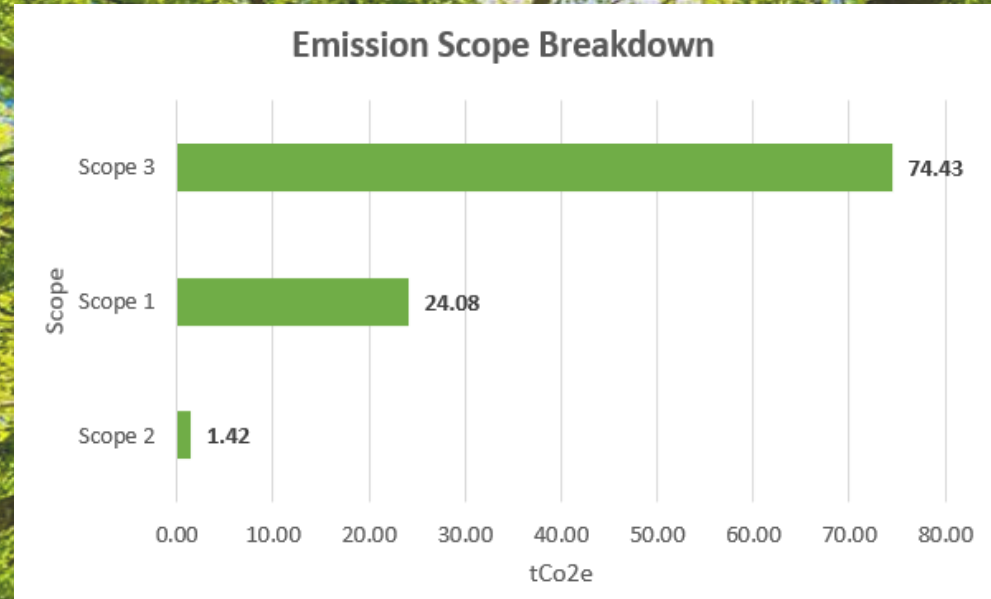
| Baseline Emissions Reporting: 2023 | |
|---|-------------------------------|
| Additional Details relating to the Baseline Direct/Indirect Emissions calculations. | |
| Baseline year emissions: | |
| EMISSIONS | TOTAL (tCO ₂ e) |
| Scope 1 | 24.08 |
| Scope 2 | 1.42 |
| Scope 3 | 74.43 |
| Total Emissions | 99.93 tCO₂e |

Direct emissions = 24.08 tCO₂e

Direct emissions are produced by sources which are owned or controlled by the reporting organisation and include electricity use, burning oil or gas for heating, and fuel consumption as a result of business travel or distribution.

Indirect emissions = 75.85 tCO₂e

Indirect emissions result from a company’s upstream and downstream activities. These are typically from outsourced/contract manufacturing, and products and the services offered by the organisation. Indirect emissions correspond to scopes 2 and 3 of the GHG Protocol.





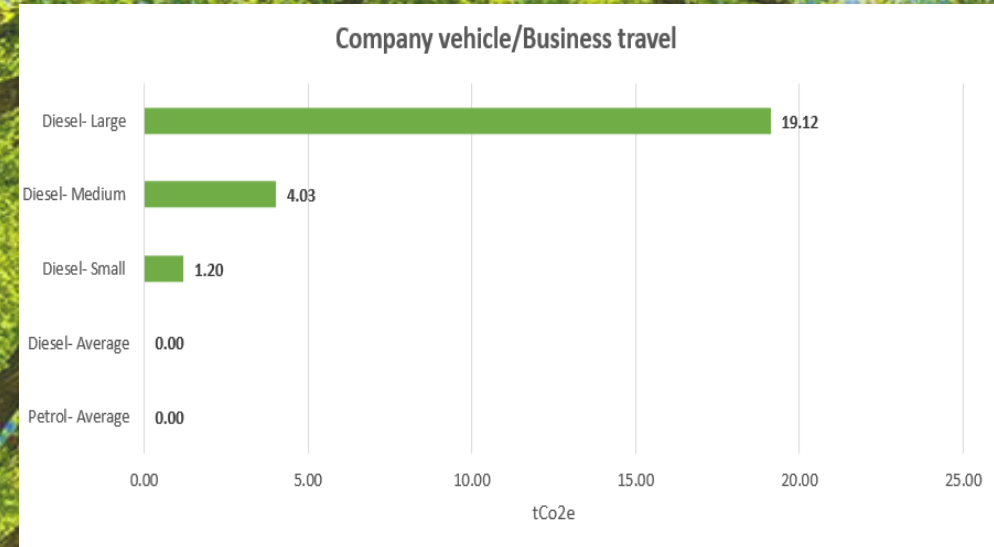
Carbon Emissions – Intensity Metrics

An intensity metric is a measurement used to express the carbon emissions or greenhouse gas emissions of a company or organisation in relation to a specific unit of output or activity. These metrics help assess the environmental efficiency of the company's operations and can be used to track progress toward emission reduction goals.

| | |
|---------------------------|--------------------------------|
| Per Employee | 12.49 tCO₂e |
| Per £1000 Turnover | 0.0012 tCO₂e |
| | |

Company Vehicles / Business Travel

| | |
|-----------------|-------------------------------|
| Diesel- Large | 19.12 tCO ₂ e |
| Diesel- Medium | 4.03 tCO ₂ e |
| Diesel- Small | 1.20 tCO ₂ e |
| Petrol- Average | 0.00 tCO ₂ e |
| Diesel- Average | 0.00 tCO ₂ e |
| Total | 24.35 tCO₂e |

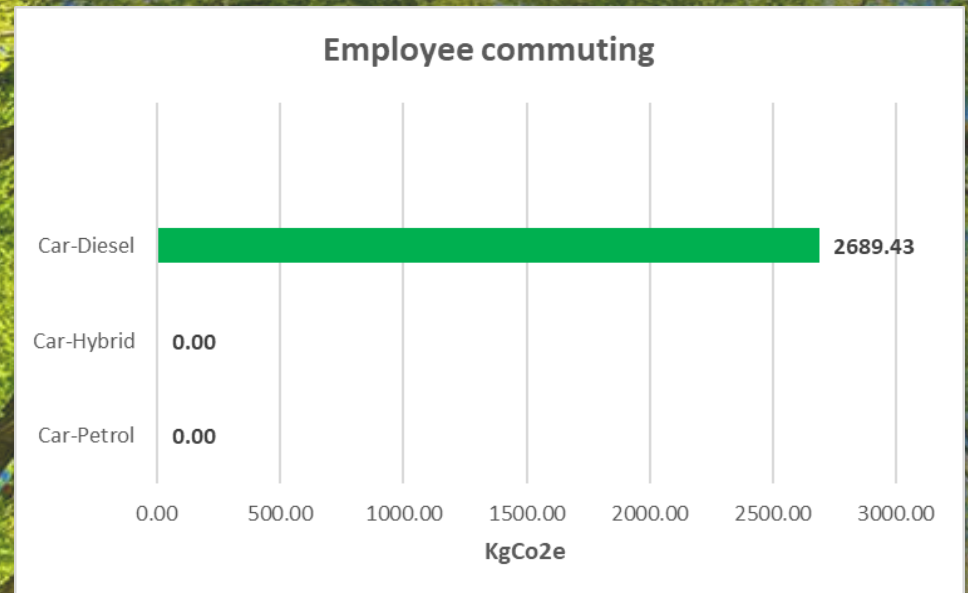
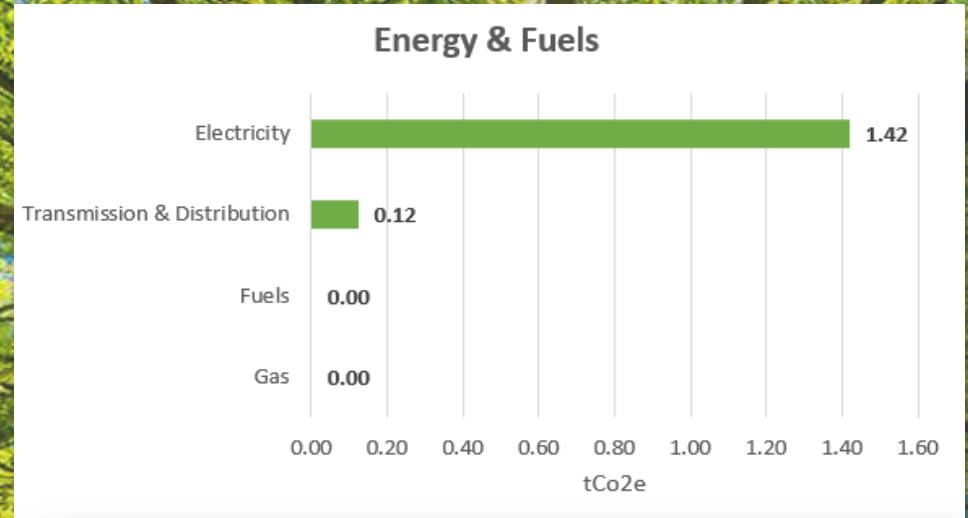


Energy & Fuels (Market based)

| | |
|-----------------------------|------------------------------|
| Electricity | 1.42 tCO ₂ e |
| Transmission & Distribution | 0.12 tCO ₂ e |
| Gas | 0.00 tCO ₂ e |
| Fuels | 0.00 tCO ₂ e |
| Total | 1.54 tCO₂e |

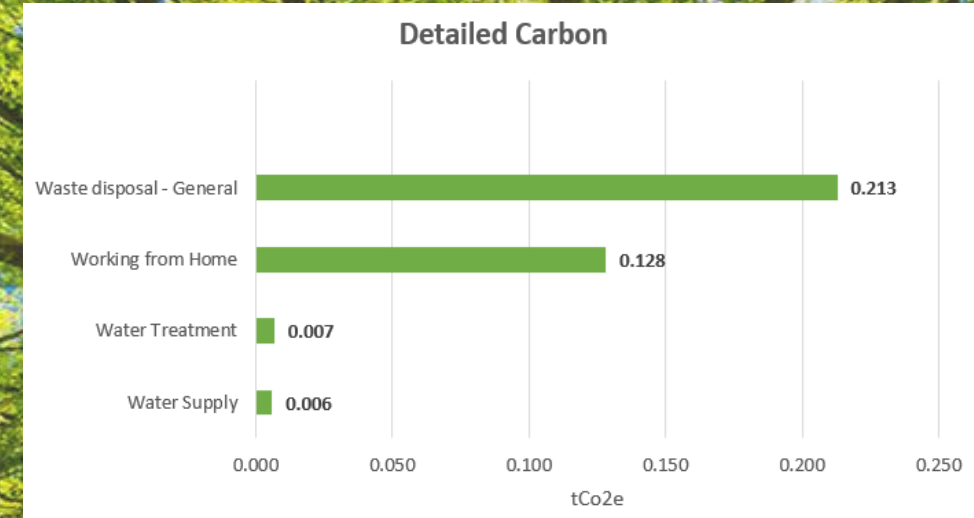
Employee Commuting

| | |
|--------------|------------------------------|
| Car Diesel | 2.69 tCO ₂ e |
| Car Petrol | 0.00 tCO ₂ e |
| Car Hybrid | 0.00 tCO ₂ e |
| Total | 2.69 tCO₂e |



Detailed Carbon – Scope 3

| | |
|--------------------------|-------------------------------|
| Waste disposal - General | 0.213 tCO ₂ e |
| Working from Home | 0.128 tCO ₂ e |
| Water Treatment | 0.007 tCO ₂ e |
| Water Supply | 0.006 tCO ₂ e |
| Total | 0.354 tCO₂e |



Other – Purchased & Capital Goods

| | |
|---|----------------------------|
| Specialist Materials | 64.16 tCO ₂ e |
| Construction and building | 2.14 tCO ₂ e |
| General Materials | 1.85 tCO ₂ e |
| Insurance and reinsurance services | 1.04 tCO ₂ e |
| Computer and electronic product | 0.93 tCO ₂ e |
| Accounting, book keeping and auditing services | 0.55 tCO ₂ e |
| Advertising and market research services | 0.17 tCO ₂ e |
| Computer and electronic product | 0.12 tCO ₂ e |
| Office administrative, office support and other business support services | 0.04 tCO ₂ e |
| Total | 71 tCO₂e |





Assessors Comments

Carbon Sense Ltd. has supported in the collection of the carbon emissions data for **South West Concrete Repairs Ltd** for the period **1 November 2022 to 31 October 2023**. We have reviewed data provided to us that had been calculated using a spend based methodology and quantified into categories disclosed in the report.

In our opinion, **99.93 Tonnes of CO₂e** represents a good indication of carbon emissions in accordance with the operational scopes outlined in this report and GHG Protocols defined by the organisations boundaries. This report reflects a fair proportion of Scope 1 & 2 emissions including all main categories of Scope 3 emissions that have been technically feasible to measure.

South West Concrete Repairs Ltd is committed to measuring and acting to reduce its emissions in all 3 Scopes in line with its sustainability goals and net zero targets and committing to;

- ✓ Achieve Net Zero in line with the Science Based targets set out by the UNFCCC - To achieve Net Zero no later than 2050 and target a 50% reduction in emissions by 2030
- ✓ Set realistic short- and long-term targets that are designed to achieve our Net Zero commitments
- ✓ Report the total Greenhouse Gas emissions of our business regularly and accurately
- ✓ Take practical steps to collect and report activity where appropriate and where concise data is available

